

# 日本体験をシマダから

外国人が島田市を英語で紹介。島田市ならではの日本の楽しみ方を提案する「公式ガイドブック」ができました（インターネット上の電子書籍のみ）。市内のお出かけスポットやおすすめのお店、世界

に誇る島田のお茶などを、7人の「シマダ通」外国人が取材。島田市を訪れたくなるような魅力を世界に発信し、外国人観光客の誘致や地域観光の活性化に役立てます。 ①広報課 ☎ 36-7355

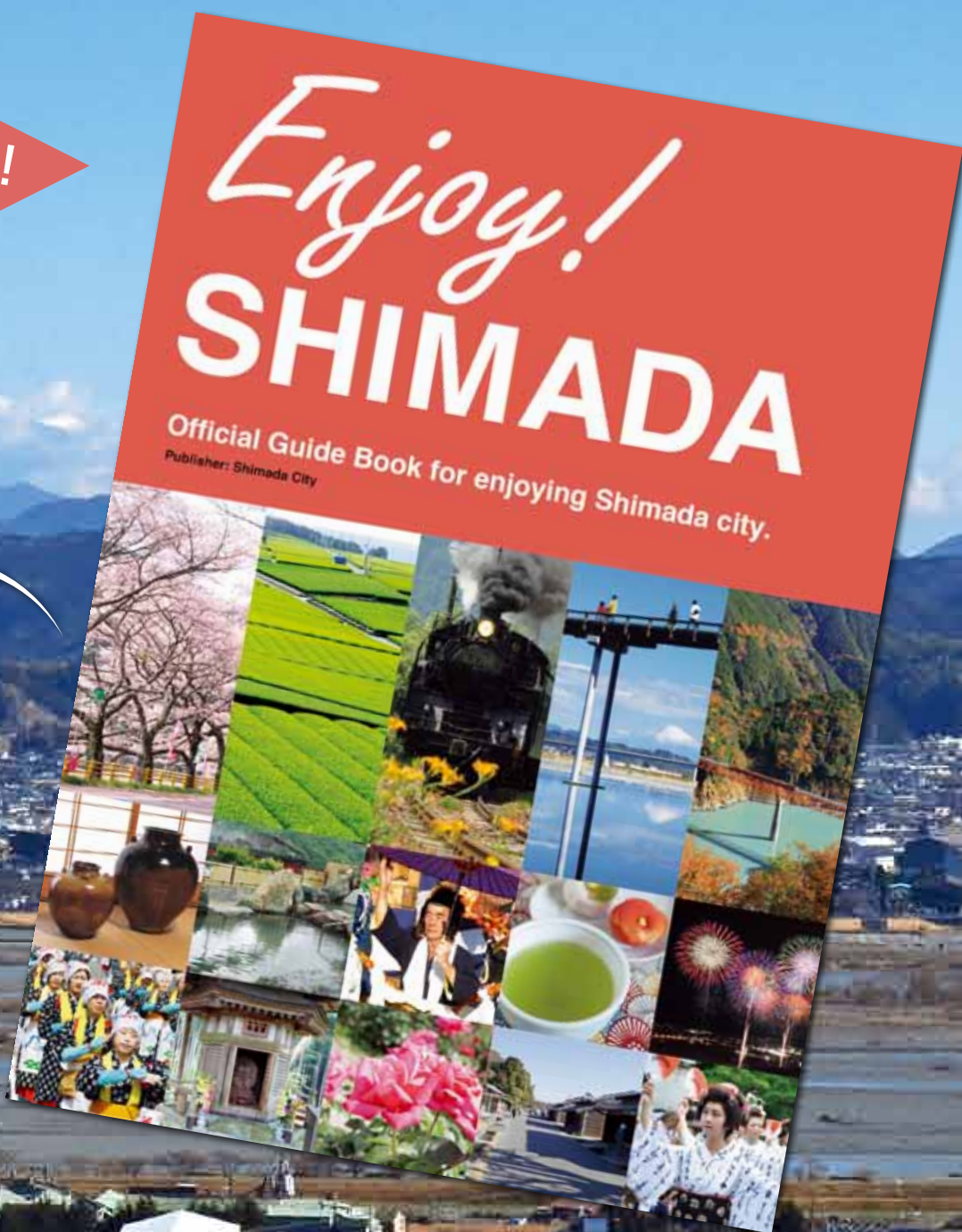
無料公開中!

FREE DOWNLOAD

## 【掲載内容】

- シマダ・フォトギャラリー
- アクセス/市の概要
- おすすめお出かけスポット
- 世界に誇る島田のお茶
- みんなの美味しいシマダ
- 住んでみてどうですか?

全36ページ



Expand your Japan from Shimada!



# the trick ng Tea ach you!

While you are in Shimada city, you might want to taste delicious green tea against the perfect backdrop. It's easy to make it happen here! David and Oscar have deep interests in Japanese green tea. They have learned much on how to make good green tea at home from the masters of green tea.



David

David is from France, the secret communicating like a local with the other people and learning how they live with green tea.

## ake delicious green tea!

...tea, but I've never tried putting fresh leaves interesting but a little difficult to do" was what I'd think. So they went to Asahien Yu (a tea shop) to learn the correct ways on how to make proper tea. It is important to consider what kind of character you want to have. They were surprised when they heard that the amount of water and the brewing time makes all the difference. "First, the measurement of green tea is important. Then, follow the instructions to achieve the perfect cup. It was so fun to make sweet tasting green tea. It was so interesting to see how they were really having fun. The most important piece of advice is "do everything slowly."

### How to make delicious green tea

1. Pour hot water into the teapot.
2. Put green tea leaves into the teapot.
3. Pour the hot water from the teapot into the teacup. Put the lid on the pot and leave it for a minute or less to steep.
4. Pour a little bit from one teacup to the next. This is very important to maintain consistency between the different cups of tea.

## You can get green tea here! Recommended tea shops in Shimada

Visit the speciality tea shops if you buy green tea. From popular tea to seasonal tea, let's ask them their specials!

### Shizuoka Shimada Sasuki-en

I recommend authentic drip tea bags!



Drip tea (high deep-steamed tea "Nestlé") is used the same as with hot brewed green tea. You can make an extract even with the drip type. Let it lie in a teapot. The correct way to make green tea is described above on the package. (¥100 for 1 bag)



Tel: 0547-38-2107  
Address: 598-1 Sakuchi Shimada city  
Opening hours: 10:00-18:00  
Closed: Open on holidays  
URL: <http://teak.primo/shimada>

### Kanesu Seicha

You can taste a wide variety of tea here!



Our goods were awarded a gold medal at the world green tea contest for various kinds of green tea. At the store you can learn about green tea over tea tasting in English. Organic products are available too.



Tel: 0547-49-2208  
Address: 828-1136 Shimada city  
Opening hours: 10:00-17:00  
Closed: Sunday and holidays. Every day open around the start of May  
URL: <http://www.kanetsu.co.jp>

### Asahi-en Yu

Please come by when you visit Kawane!



In the tea shop's cafe you can eat sweets made with green tea. There is a variety of German tea, Kanetsu tea, Kuzurochi (green tea taste or brewed) covered with original popular with people of every country and age group.



Tel: 0547-52-4008  
Address: 327-1 Ayama Parkside city Shimada city  
Opening hours: 10:00-18:00  
Closed: Open on holidays  
URL: <http://teak.primo/shimada>

### Yamasaki-en Seicha

You can make and taste green tea with a Japanese teapot at our store!



The high grade green tea, and quite a new kind, is made by picking each leaf one by one. It will be sure to please all. To bring out the best taste, the hot water should be around 70-80°C, and pour it gently. It's a delicate grade.



Tel: 0547-53-2406  
Address: 303 Minami Shimada city  
Opening hours: 10:00-18:00  
Closed: Open on holidays  
URL: <http://www.yamasaki.co.jp>

### Izuka chaya

Our classic way of selling is still true to the traditions and history of Tea in Shimada.



The tea shop is located within 2 minutes from Shimada station. As always, it is loved by the locals. You can buy an original blend with your favorite taste. The service is really special for people who know a little more about tea.



Tel: 0547-35-1138  
Address: 3-1 Sakuchi Shimada city  
Opening hours: 10:00-18:00  
Closed: Out of shop  
URL: <http://www.izuka-tea.com>

### Kanetsu Nakano-en

With easy access from the airport, this tea shop is surrounded by green tea fields!



The green tea here represents the full variety of the Mikotohara Heights area, which is the largest tea plantation area in all of Japan. Here you can learn how to make a perfect cup of tea with a classic Japanese teapot. Green tea is also popular as a souvenir, because it's a good size, and the exterior of the package is very beautiful. Some have a picture of a plantation with Mt Fuji in the background, others have a picture of green tea fields with the famous SL steam locomotive chugging along in the background. A great little souvenir!



Tel: 0547-45-1138  
Address: 303 Minami Shimada city  
Opening hours: 10:00-18:00  
Closed: Sunday, holidays



7人の「シマダ通」が、たくさんの市民と出会い、それぞれのお気に入りを紹介。島田市を出発点とした、日本文化の楽しみ方を提案してくれます。また、日常生活のマナーやヒントから移住定住のノウハウまで、シマダ通が外国人目線で「島田暮らし」を応援。ホームページのトップページまたはQRコードから、ご覧ください！

アンディーさん (アメリカ)  
Andy from USA



ローカルな地域にも行ってみるべきだよ。僕のオススメは甘酒。超クール！

島田の人は、とっても親切。住んでみれば、ここの住み易さが分かるはずよ！



キャシーさん (アメリカ)  
Kashi from USA

ビ・ホンイエンさん (中国)  
Bi Hongya & Sakura from China



島田に来たら、絶対に大井川鐵道を訪れるべき。SLってカッコいい！

## Enjoy Shimada







ホームページバナー



QRコード

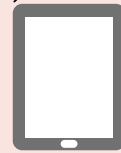


パソコン

スマホ



タブレット



What's to make Good We'll t



Oskar

Oskar is from Sweden and moved to Japan to study. He loves green tea and is interested in exploring Shimada's green tea world.

It's easy to ma

"I like Japanese green tea in a teapot. It seems like David and Oskar use a shop in Kawane) to let actor you want the tea that "the temperature the difference as to taste, or an astronaut should be appropriate appropriate temperature their first try, but they Asahien Yu's key piec

22



Recommended Spots in the city

Let's visit the popular places!

**Andy**  
from Pennsylvania, USA,  
stayed in Shimada for 6 months.  
He has often returned to enjoy  
the nature, onsen, and green  
tea that the area is blessed with



**Annamarie**  
from Arizona, USA, has been staying in Shimada for 6 months. Shimada is the first place she has lived in Japan. She is excited to experience the traditional and authentic Japan.

There aren't dazzling sightseeing spots, but there are many relaxing and charming places in Shimada City. Some of them are in fact quite rare in Japan. Whether for a group, a family, or the independent traveler, we will introduce you to the recommended spots!

2. Kawane Onsen (Hot spring)

Soak your skin smooth in the iron-rich waters of the Kawane hot spring. There is a swimming pool, as well as the famous outdoor bath for those who enjoy soaking the locals. There is a restaurant with Japanese food and souvenir shops attached to the building. There is also a free "hot bath" that can be enjoyed easily, and contains the same Kawane onsen water as the baths. The hot bath has a slightly higher temperature than the regular baths. After only a short period of time your legs will become wobbly smooth. Many people can enjoy standing or sitting around the hot bath while engaging in pleasant conversation. The Kawane onsen price starts at ¥570.

Tel 0547-53-4330  
Address 2205 Sasumado Kawane-cho Shimada-city  
Opening hours 9:00-21:00  
URL http://kawaneonsen.jp/

I didn't realise the river crossings on the Tokaido Road played such an important role in Shimada's culture.

3.

At this museum on the banks of the river, you can see the original government building. It is only a 10-minute walk from the museum.



4. Horai-Bridge

The Horai bridge is world's longest wooden footbridge and certified by the Guinness Book of World Records, with its length of 857.4 meters. It's very popular as a tourist destination. And 857.4 can be pronounced "ya-ho-ne-shi" which sound means "Good Luck" in Japanese. Many people visit the bridge for their healthy life. It is also often used in the filming of period dramas. The walking fee for adults is only ¥100 and for elementary school students less than ¥10.

Tel 0547-57-1241 (Shimada city tourism association)  
Address 2-22-14 Minami, Shimada-city

1. Oigawa Railway



Wow! Check out the black steam coming out of the smoke stack!

The Steam Locomotives were used along this route in the early Showa period, and they made daily trips as part of the transportation system on the Oigawa River. The Locomotives are actually quite rare in Japan. The Oigawa Railway consists of about 65 kilometers with two lines. One line is the Oigawa-Horai (Oigawa Main Line) along the Oigawa River, and the other is the Iwasa Son (Iwasa Line), which goes up to the Southern Alps. The landscape from the train puts the spectacular return of the countryside on display. You can enjoy the seasonal views of green tea fields, cherry blossoms, and falling leaves. Tickets are available for ¥2520 for a one-way adult ticket. It takes about 80 mins one way. The departure time is around lunch time, so don't miss the chance to get a famous Japanese bento box at the station to take with you for your ride!

Tel 0547-45-4112  
Address 2-1112-29 Karuyastuzuma, Shimada-city  
Opening hours 9:00-17:00  
URL http://oigawa-railway.co.jp/



アンナマリーさん (アメリカ)  
Annamarie from USA



自然・温泉・  
美味しい料理。  
いっぱいできた  
友達も、このまち  
の魅力だわ!

スリーさん (ネパール)  
Shree from Nepal



自然も茶畑も  
すごくキレイ!  
それに皆さんが  
だれに対しても  
とても親切なの。



オスカルさん (スウェーデン)  
Oskar from Sweden



ダビイさん (フランス)  
David from France

島田に来たら  
やっぱり日本茶。  
美しい景色まで  
見られるなんて、  
もー最高!